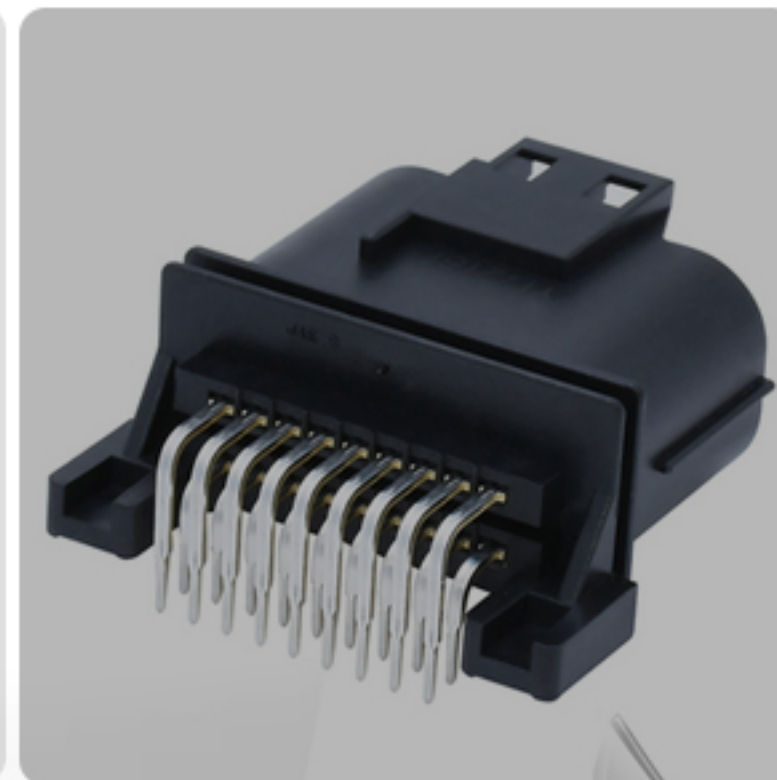


# 2019

YUEQING KINKONG ELECTRIC CO., LTD

## MOTORCYCLE EFI CONNECTOR





**PART NUMBER:** CKK7362A-1.0-21

CKK7362A-1.0-11

**OEM NO.:** MX23A36XF1+MX23A36XF1

MX23A36NF1

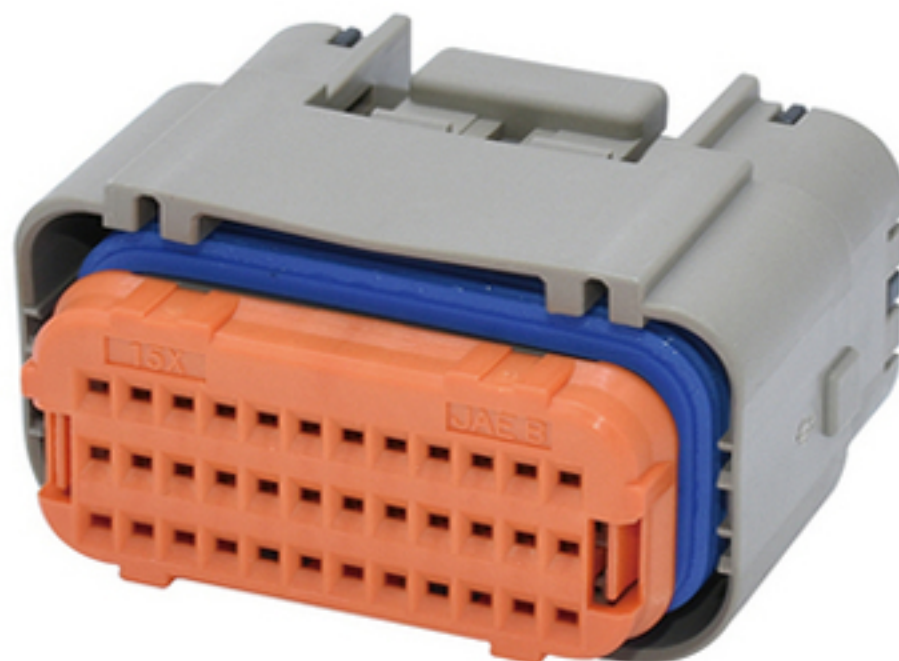
**POSITION:** 36

36

**Counterpart:** CKK7362A-1.0-11

CKK7362A-1.0-21

**Typical Application:** Suzuki motorcycle ECU's on GSXR 1000 K7 and up, GSXR 600, 750 K8 and up 2008 GSX-R600



**PART NUMBER:** CKK7362G-1.0-21

CKK7362G-1.0-11

**OEM NO.:** MX23A36SF2+MX23A36XF1

MX23A36NF6

**POSITION:** 36

36

**Counterpart** CKK7362G-1.0-11

CKK7362G-1.0-21

**Typical Application:** Suzuki motorcycle ECU's on GSXR 1000 K7 and up, GSXR 600, 750 K8 and up 2008 GSX-R600



PART NUMBER:	CKK7181A-1.0-21	CKK7181A-1.0-11
OEM NO.:	MX23A18SF1/MX23A18XF1	MX23A18NF1
POSITION:	18	18
Counterpart:	CKK7181A-1.0-11	CKK7181A-1.0-21
Typical Application:	Kawasaki/Honda/Yamaha/Suzuki	



PART NUMBER:	CKK7261A-1.0-21	CKK7261A-1.0-11
OEM NO.:	MX23A26SF1/MX23A26XF1	MX23A26NF1
POSITION:	26	26
Counterpart	CKK7261A-1.0-11	CKK7261A-1.0-21
Typical Application:	KAWASAKI/YAMAHA/BMW	



**PART NUMBER:** CKK7341A-1.0-21

CKK7341A-1.0-11

**OEM NO.:** MX23A34SF1/MX23A34XF1

MX23A34NF1

**POSITION:** 34

34

**Counterpart:** CKK7341A-1.0-11

CKK7341A-1.0-21

**Typical Application:** Kawasaki/Suzuki



**PART NUMBER:** CKK7341G-1.0-21

CKK7341G-1.0-11

**OEM NO.:** MX23A34XF1

MX23A34NF6

**POSITION:** 34

34

**Counterpart** CKK7341G-1.0-11

CKK7341G-1.0-21

**Typical Application:** Kawasaki/Suzuki TOS Sensor and O2 Sensor



PART NUMBER: CKK7394A-1.0-21

CKK7394A-1.0-11

OEM NO.: MX47039SF1+MX47039XF1

MX47039NF1

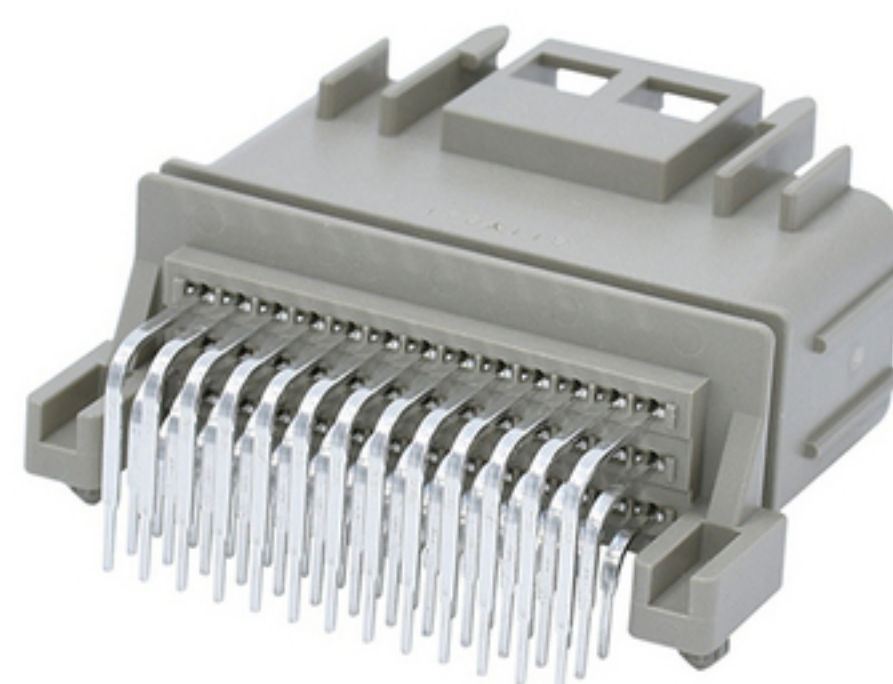
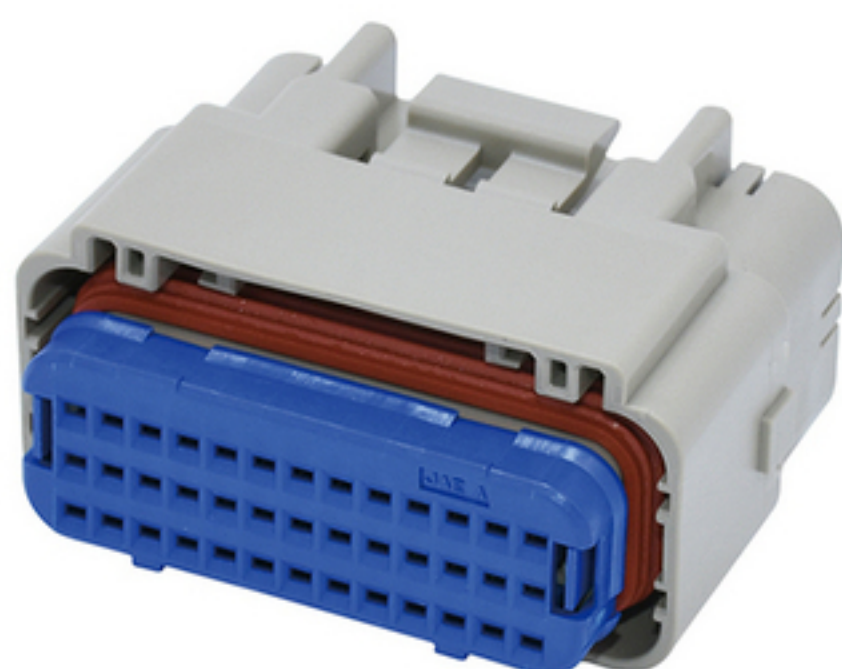
POSITION: 39

39

Counterpart: CKK7394A-1.0-11

CKK7394A-1.0-21

Typical Application:



PART NUMBER: CKK7394G-1.0-21

CKK7394A-1.0-11

OEM NO.: MX47039SF2+MX47039XF1

MX47039NF2

POSITION: 39

39

Counterpart: CKK7394A-1.0-11

CKK7394G-1.0-21

Typical Application:

SUZUKI GSXR



**PART NUMBER:** CKK7401A-1.0-21

CKK7401A-1.0-11

**OEM NO.:** MX23A40SF1

MX23A40NF1

**POSITION:** 40

40

**Counterpart:** CKK7401A-1.0-11

CKK7401A-1.0-21

**Typical Application:**



**PART NUMBER:** CKK7121A-1.0-21

CKK7394A-1.0-11

**OEM NO.:** MX23A12SF1 +MX23A12XF1

MX47039NF1

**POSITION:** 12

39

**Counterpart** CKK7121A-1.0-11K

CKK7394A-1.0-21A

**Typical Application:**



PART NUMBER: : CKK726-1.6-21

CKK726AO-1.6-11

OEM NO.: 3-1437290-7

9-6437287-8 / 9-1437287-8

POSITION: 26

26

Counterpart: CKK726A-1.6-11/CKK726SG-1.6-11 CKK726-1.6-21

Typical Application:

HONDA/SUZUKI/KTM/  
 PLAY ADAPTOR FUEL/IGNITION CONTROLLER  
 HONDA INTEGRA DC5 HONDA S2000 HONDA CIVIC EP3



PART NUMBER: CKK726SG-1.6-11

CKK734-1.6-21

OEM NO.: 6437288-6/1437288-6

4-1437290-0

POSITION: 26

34

Counterpart CKK726-1.6-21

Typical Application:



PART NUMBER: CKK734AO-1.6-11

CKK734SG-1.6-11

OEM NO.: 4-1437290-0

2-6447232-3

POSITION: 34

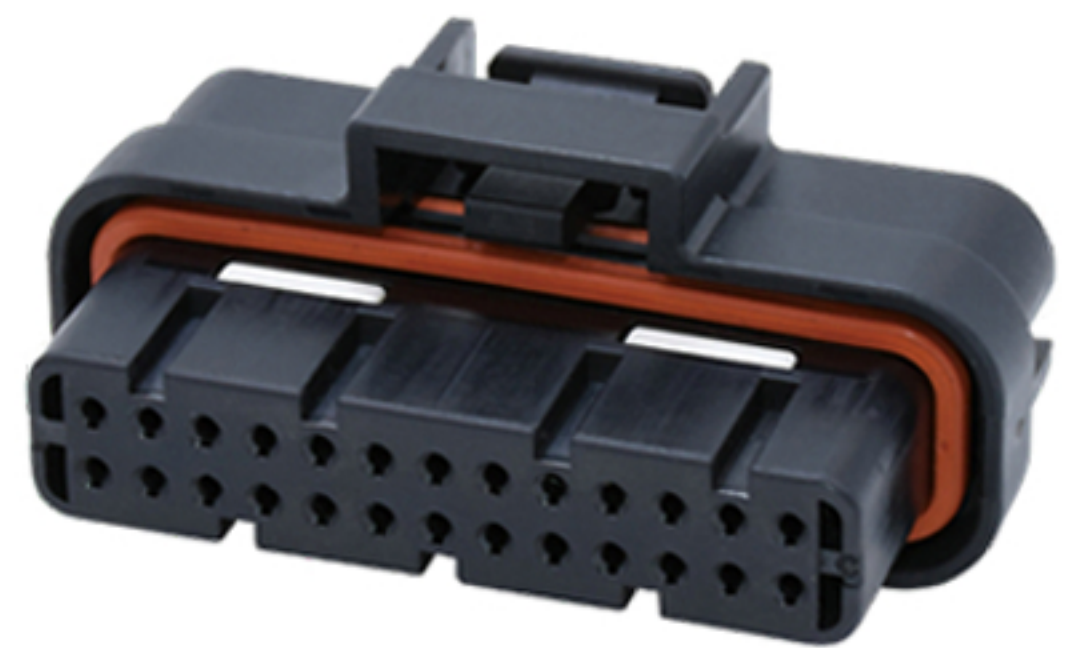
34

Counterpart: CKK734-1.6-21

CKK734-1.6-21

Typical Application:

Honda/Suzuki/Ducati DTC Traction Control



PART NUMBER: CKK734B-1.6-21

CKK726K-1.6-21

OEM NO.: 4-1437290-1

1473712-1

POSITION: 34

26

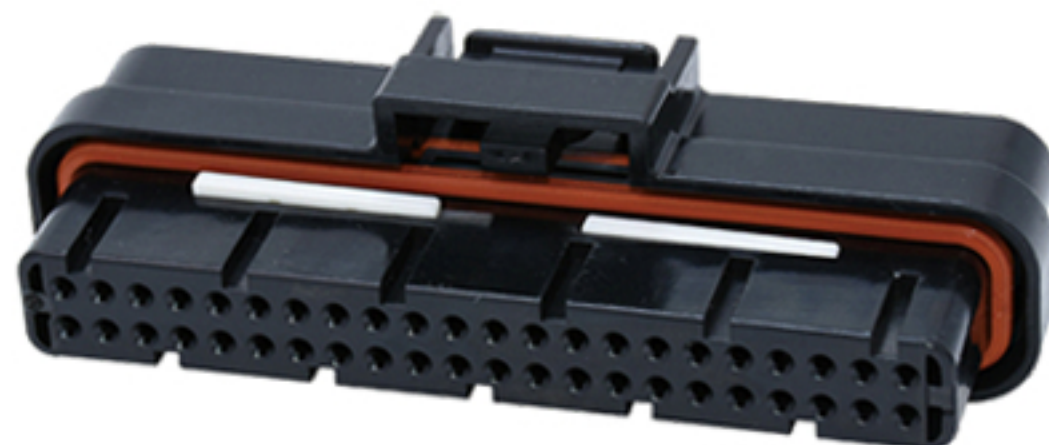
Counterpart: CKK734BAO-1.6-11

CKK726K-1.6-11

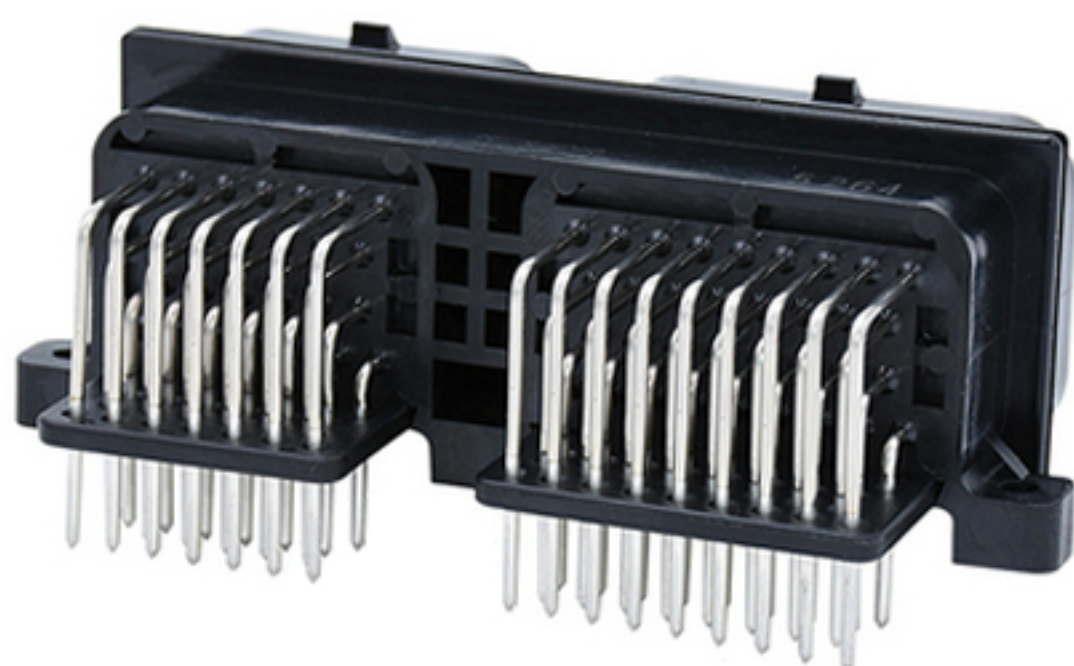
Typical Application:

KAWASAKI 1400 GTR  
/ ZG 1400 / CONCOURS 14, DUCATI PANIGALE 1299 / 1299S  
1199 PANIGALE R 1199 / 1199S PANIGALE  
1199 SUPERLEGGERA 899 PANIGALE 959 PANIGALE DIAVEL,  
MITSUBISHI





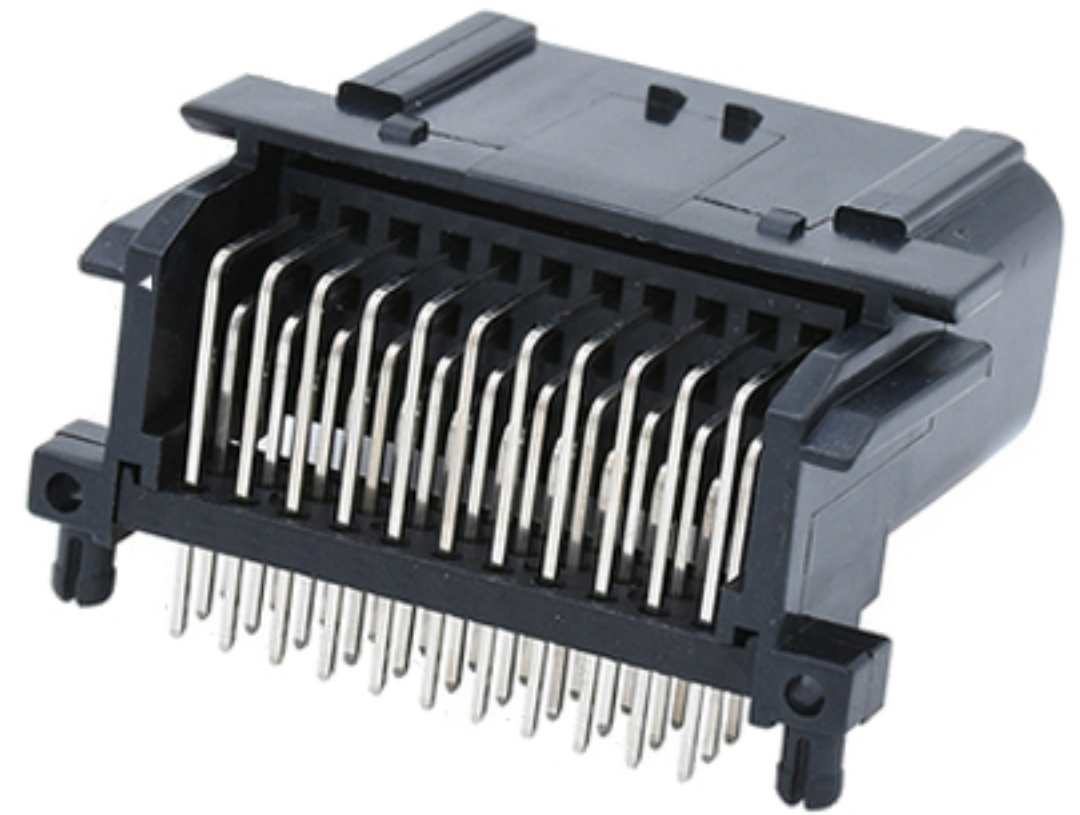
PART NUMBER:	CKK726K-1.6-11	CKK744-1.6-21
OEM NO.:	6473711-1 / 1473711-1	1376886-1
POSITION:	26	44
Counterpart:	CKK726K-1.6-21	/
Typical Application:	ECU	SUZUKI SV650 ECU CONNECTOR



PART NUMBER:	CKK760A-1.6-11	CKK760CBA-1.6-11
OEM NO.:	1437288-3	1473427-1
POSITION:	60	60
Counterpart	CKK726-1.6-21	CKK734B-1.6-21
Typical Application:	+CKK734-1.6-21	+ CKK726C-1.6-21

SUZUKI/TRIUMPH/ECMCDIECU

SUZUKIAN650BURGMAN2002-2004(AN650)99-10TRIUMPH



PART NUMBER: CKK733S-0.7-21

CKK733S-0.7-11

OEM NO.: 6189-7106

6188-4871

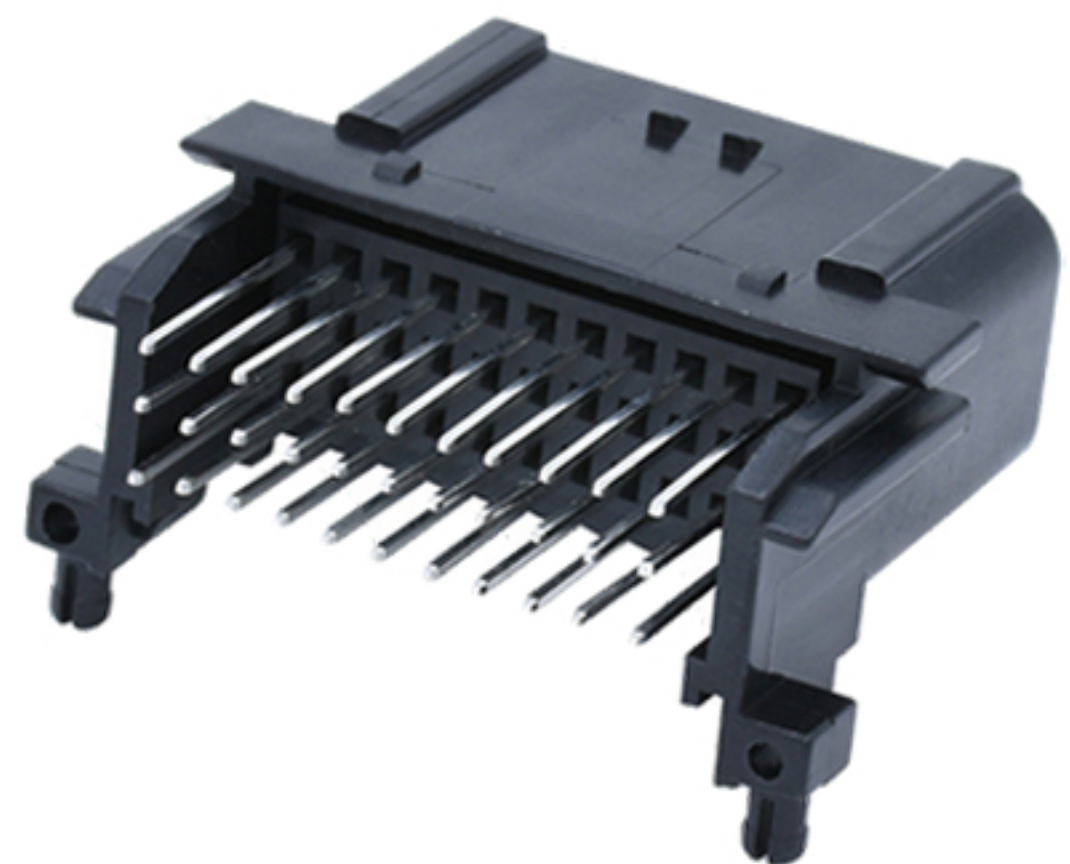
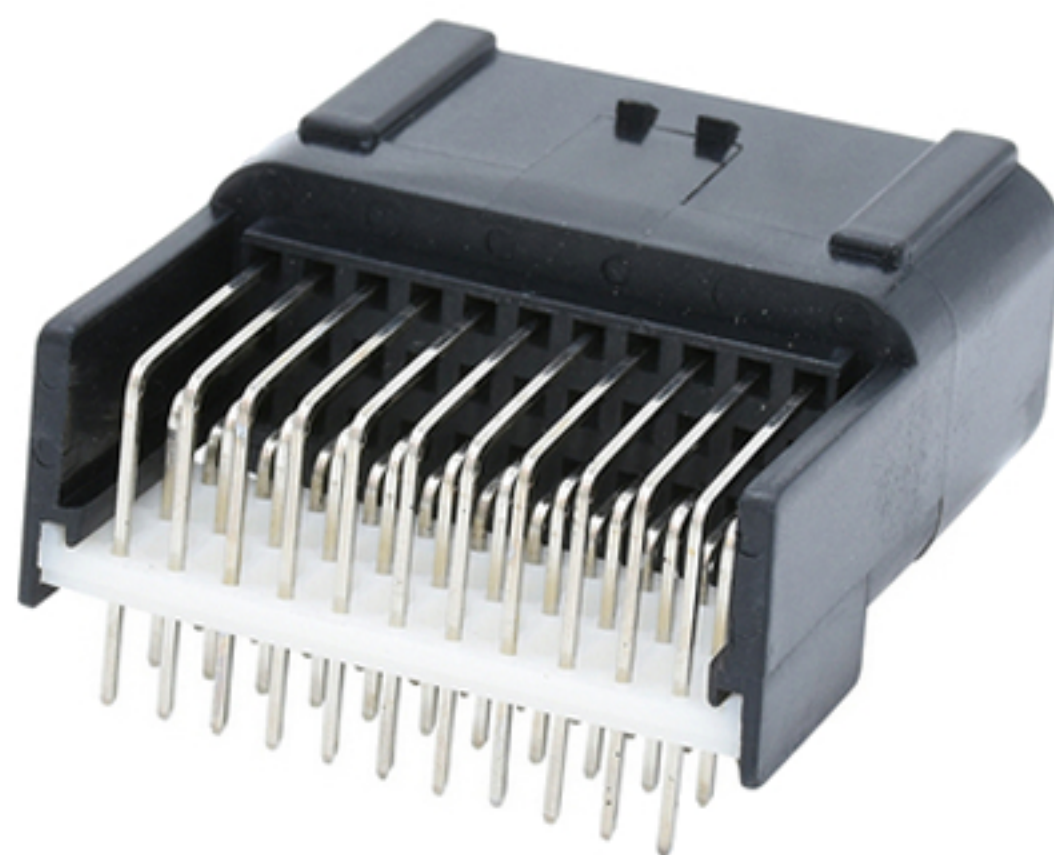
POSITION: 33

33

Counterpart: CKK733S-0.7-11

CKK733S-0.7-21

Typical Application: KAWASAKI / HONDA



PART NUMBER: CKK733C-0.7-11

CKK733SZ-0.7-11

OEM NO.: 6188-0800

POSITION: 33

33

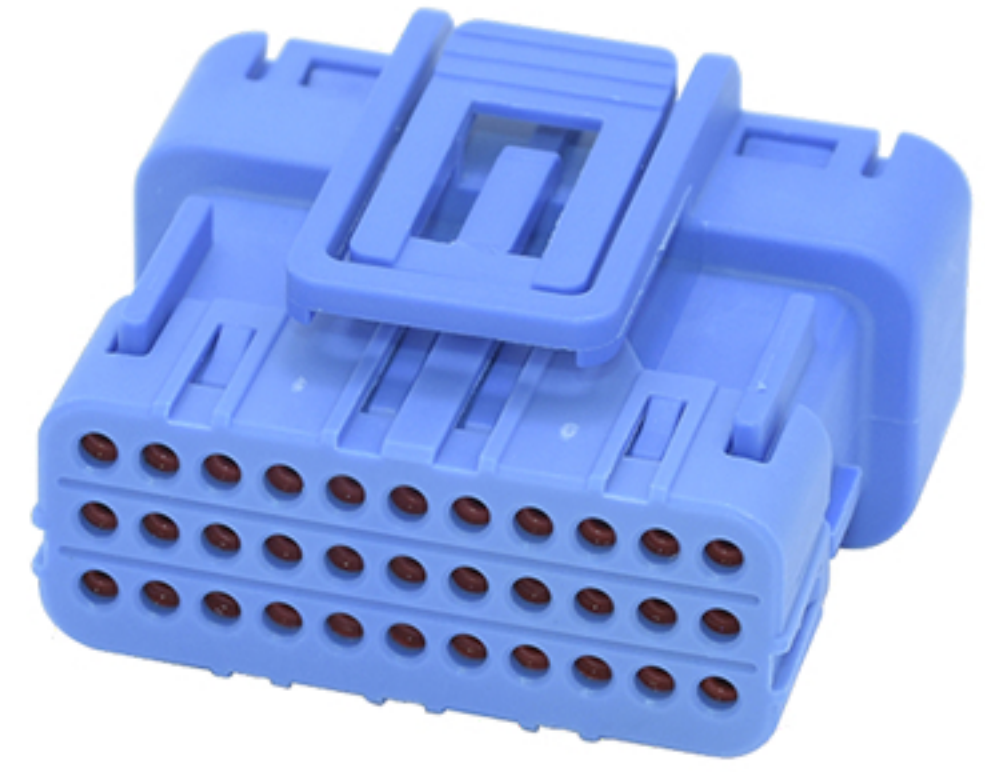
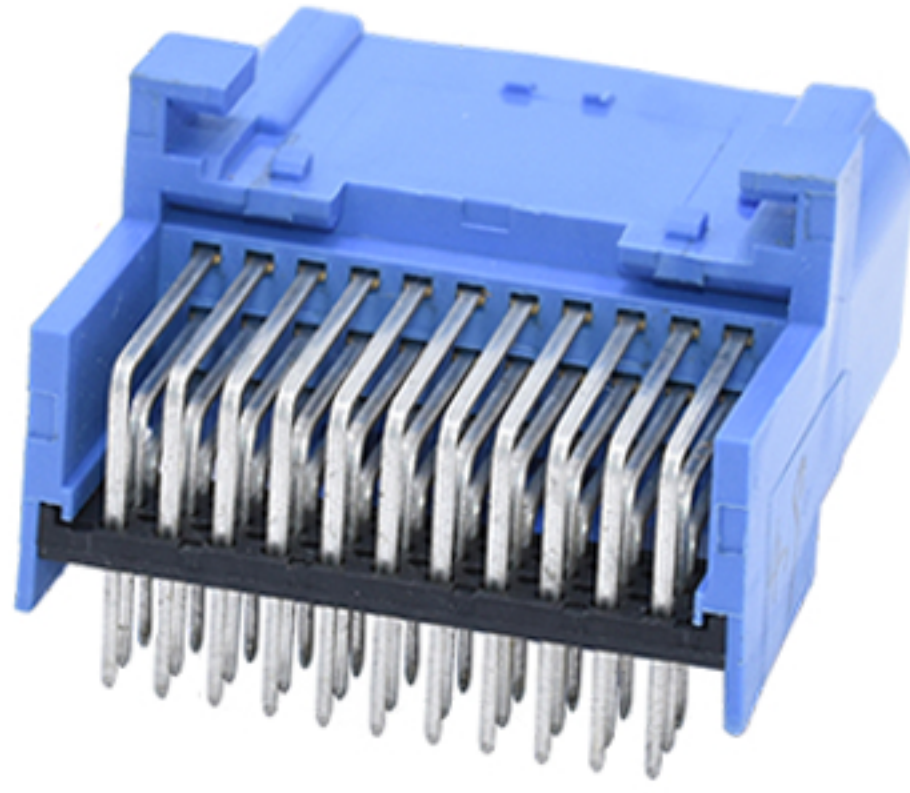
Counterpart: CKK733S-0.7-21

CKK733S-0.7-21

Typical Application:

YAMAHA/KTM

GET RX1-PRO ECU SUZUKI RMZ250 2018 KTM 350 EXC-F 17-19



**PART NUMBER:** CKK733BL-0.7-11

CKK733BL-0.7-21

**OEM NO.:**

**POSITION:** 33

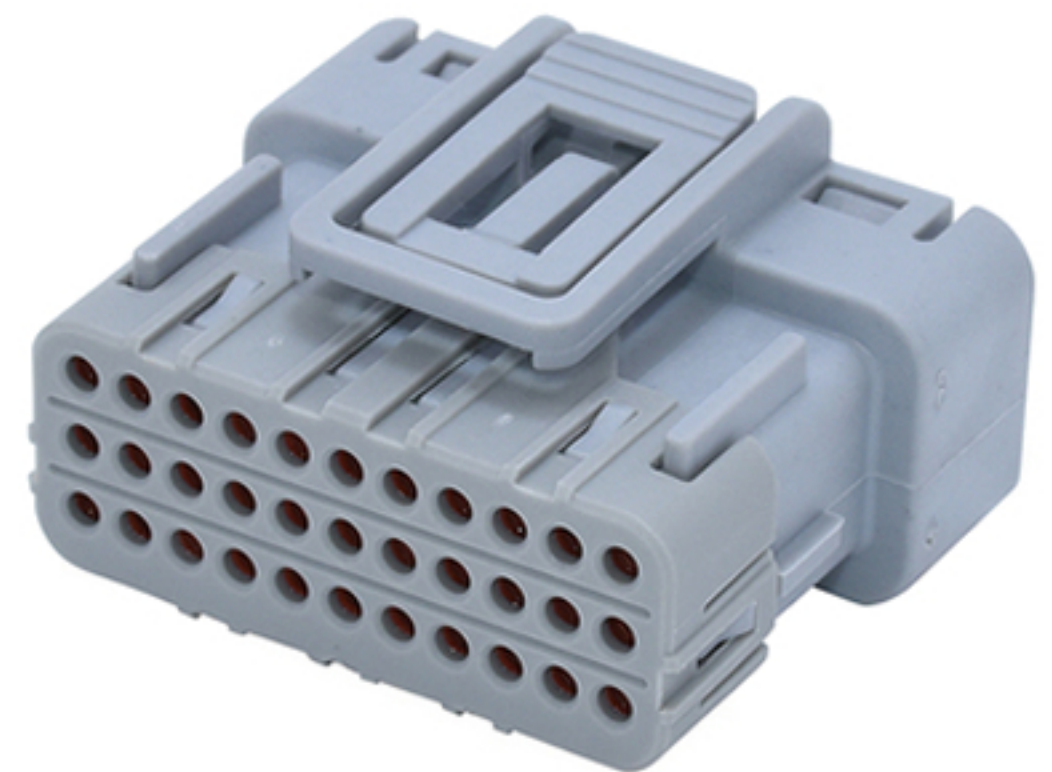
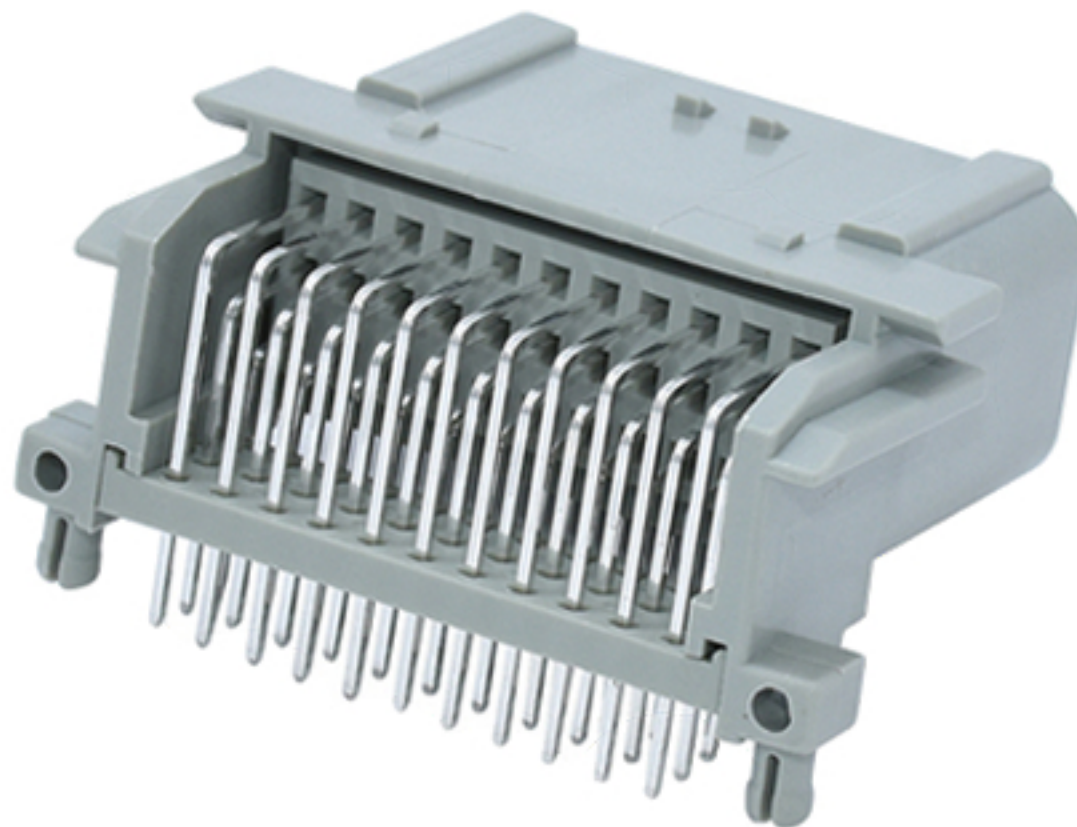
33

**Counterpart:** CKK733BL-0.7-21

CKK733BL-0.7-11

**Typical Application:**

HONDA/KEIHIN ECU



**PART NUMBER:** CKK733A-0.7-11

CKK733A-0.7-21

**OEM NO.:**

6189-1264

**POSITION:** 33

33

**Counterpart:** CKK733A-0.7-21

CKK733A-0.7-11

**Typical Application:** HONDA/KAWASAKI

HONDA PCM-ECM-ECU  
FUEL INJECTED MODELS



PART NUMBER: CKK733BR-0.7-11

CKK733BR-0.7-21

OEM NO.:

POSITION: 33

33

Counterpart: CKK733BR-0.7-21

CKK733BR-0.7-11

Typical Application: HONDA/KAWASAKI



PART NUMBER: CKK733L-0.7-11

OEM NO.:

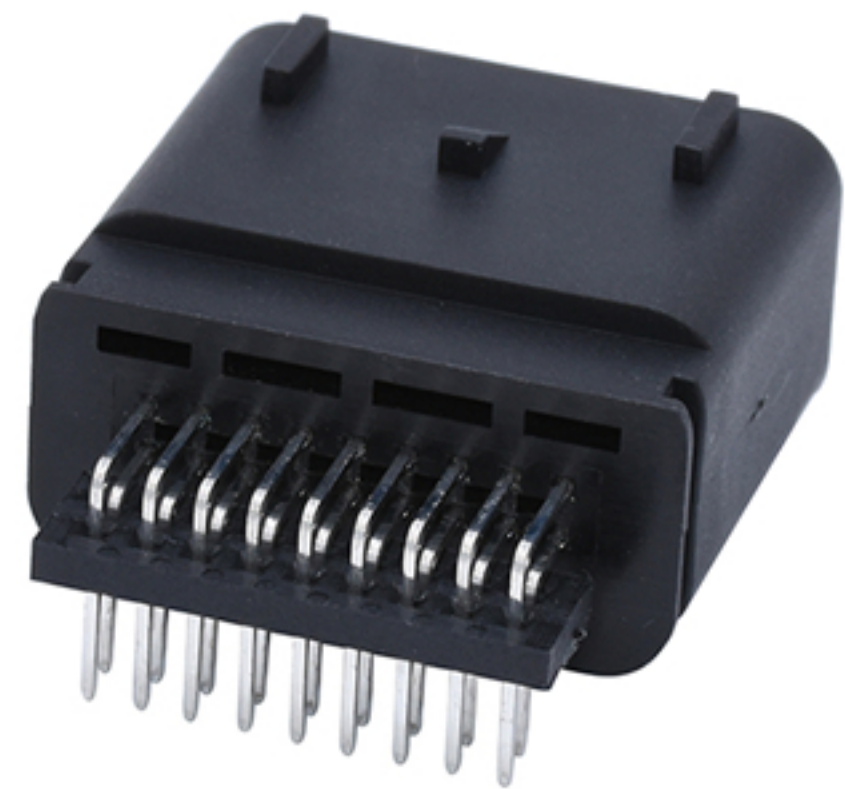
POSITION: 33

Counterpart: CKK733S-0.7-21

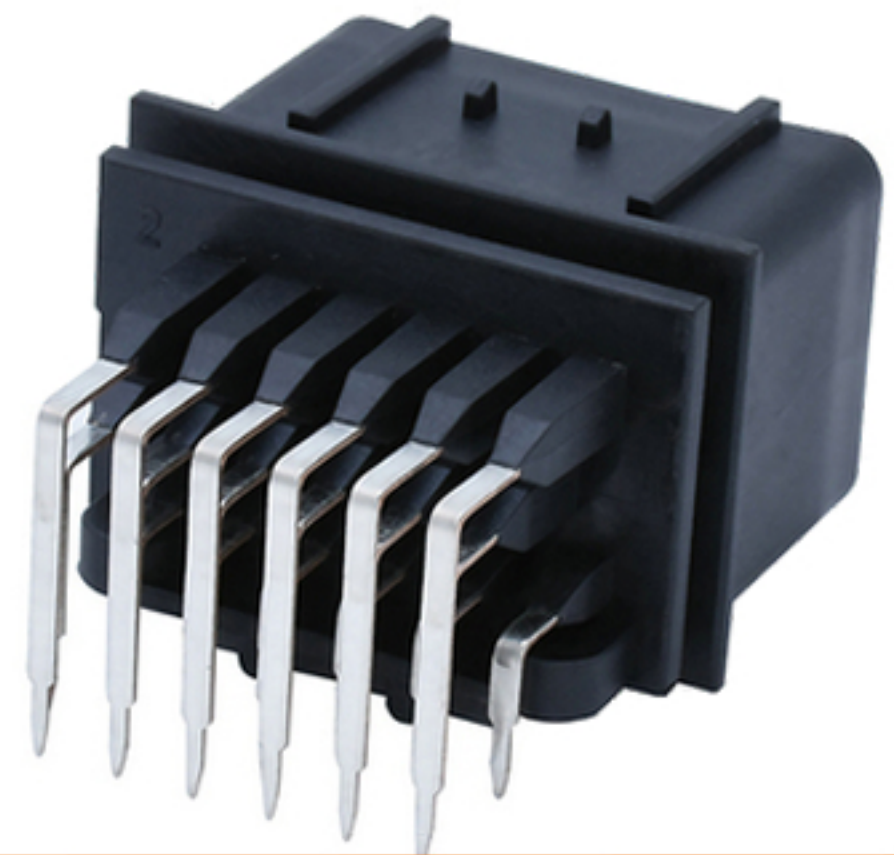
Typical Application: ECU BOX WITH 33P PIN HEADER



<b>PART NUMBER:</b>	CKK7183W-1.0-21	CKK7183W-1.0-11
<b>OEM NO.:</b>	2203663-6	18
<b>POSITION:</b>	18	
<b>Counterpart:</b>	CKK7183W-1.0-11	CKK7183W-1.0-21
<b>Typical Application:</b>	2016 HARLEY TOURING FLHXS	



<b>PART NUMBER:</b>	CKK7183B-1.0-21	CKK7183B-1.0-11
<b>OEM NO.:</b>	2203663-5	
<b>POSITION:</b>	18	18
<b>Counterpart:</b>	CKK7183B-1.0-11	
<b>Typical Application:</b>	2016 HARLEY TOURING FLHXS	



PART NUMBER: CKK7182Y-1.8-21

CKK7182Y-1.8-11

OEM NO.: 344106-1

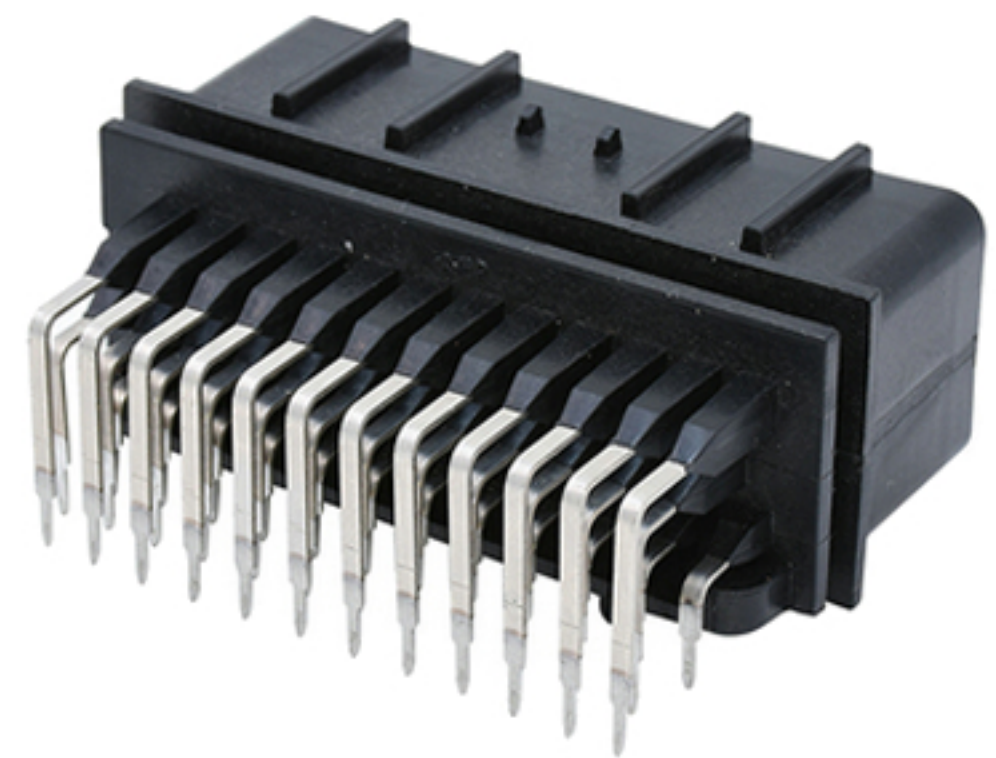
POSITION: 18

18

Counterpart: CKK7182Y-1.8-11

CKK7182Y-1.8-21

Typical Application: SUZUKI/TRIUMPH  
 CDI UNIT M&W CDI IGNITION UNITS  
 M IGN EX AND M TC MUX  
 SUZUKI VITARA (LY) 1.6 DDIS (APK 416D) 120 HP



PART NUMBER: CKK7362Y-1.8-21

CKK7362Y-1.8-11

OEM NO.: 344111-1

POSITION: 36

36

Counterpart: CKK7362Y-1.8-11

CKK7362Y-1.8-21

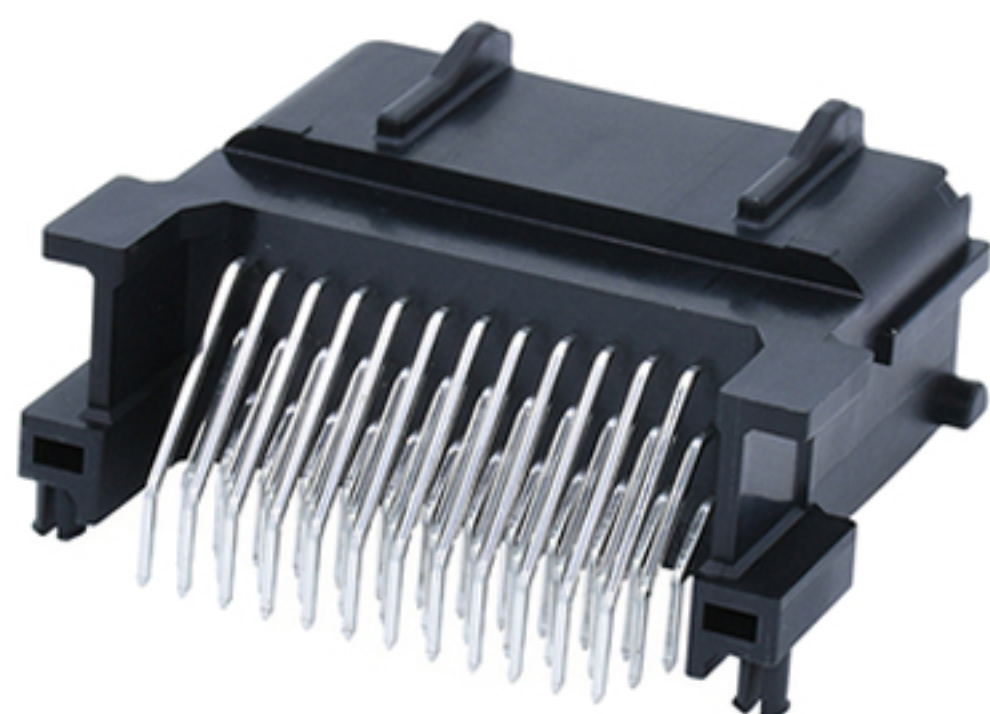
Typical Application: M&W CDI IGNITION UNITS  
 MOTEC M4, M48, M8 ECU'S  
 OMEX ECU'S  
 KAWASAKI PARTI MOTEUR KXF 450CC 2009-2017



PART NUMBER:	CKK721S-0.7-21	CKK721S-0.7-11
OEM NO.:	6189-7108	6188-0790
POSITION:	21	21
Counterpart:	CKK721S-0.7-11	CKK721S-0.7-21
Typical Application:	HONDA PCM-ECM-ECU	



PART NUMBER:	CKK733T-0.7-21	CKK733T-0.7-11
OEM NO.:		
POSITION:	33	33
Counterpart	CKK733T-0.7-11	CKK733T-0.7-21
Typical Application:		



**PART NUMBER:** CKK7361J-0.7-11A

CKK7361J-0.7-21

**OEM NO.:**

**POSITION:** 36

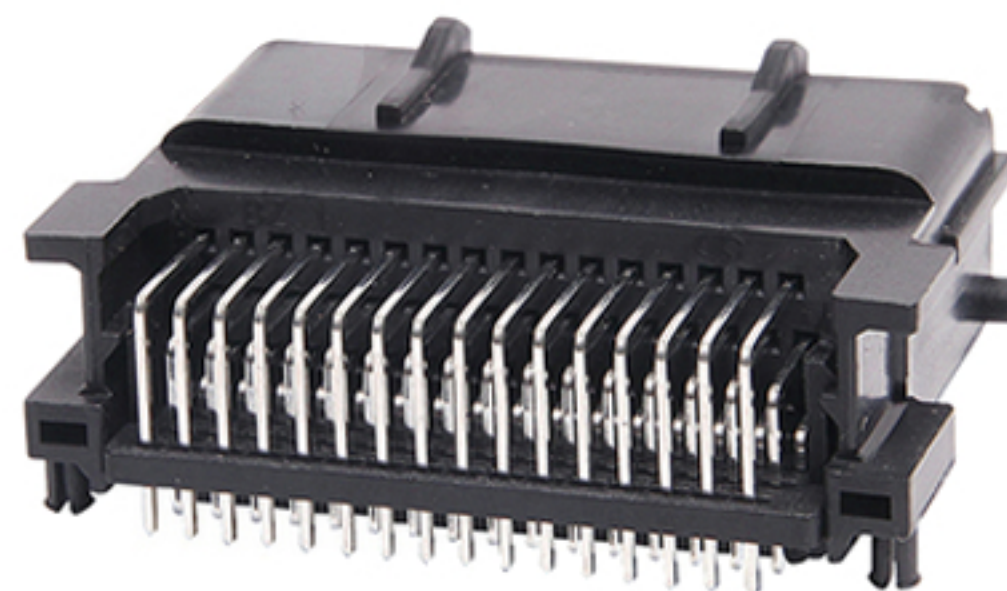
36

**Counterpart:** CKK7361J-0.7-21

CKK7361J-0.7-11A

**Typical Application:**

SUZUKI/TRIUMPH HARLEY  
 SCHNITZ ECU REFLASH ECU ECM  
 SUZUKI GSXR1000 2014 TRIUMPH



**PART NUMBER:** CKK7481J-0.7-21

CKK7481J-0.7-11

**OEM NO.:** 48ZRO-B-2A

**POSITION:** 48

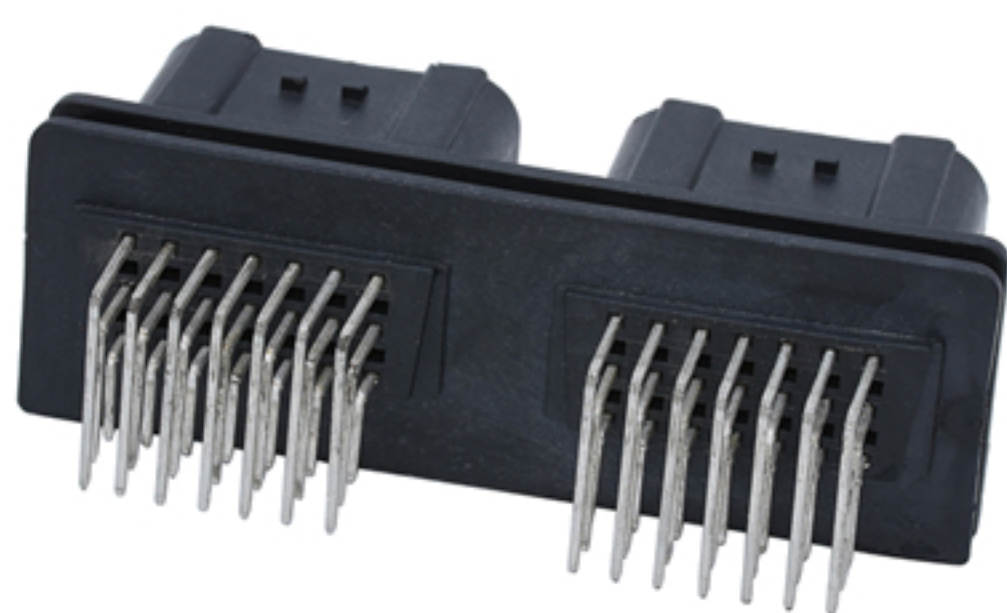
48

**Counterpart** CKK7481JZ-0.7-11/CKK7481J-0.7-11 CKK7481J-0.7-21

**Typical Application:**

SUZUKI/TRIUMPH HARLEY  
 SCHNITZ ECU REFLASH ECU ECM  
 SUZUKI GSXR1000 2014 TRIUMPH





**PART NUMBER:** CKK7421S-0.7-11

CKK7242-1.8-11

**OEM NO.:**

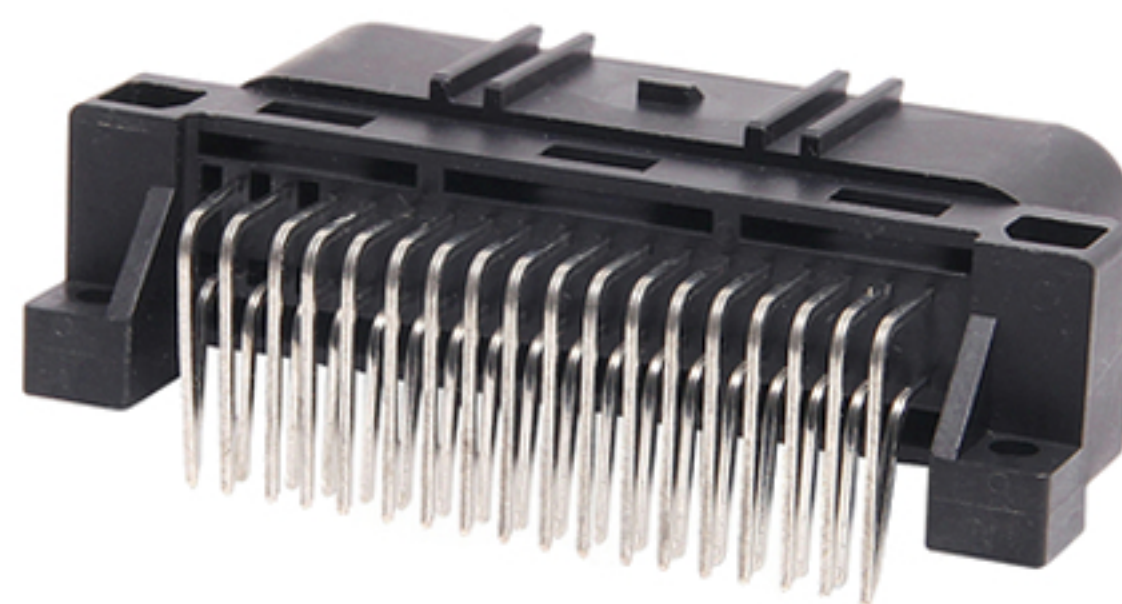
**POSITION:** 42

24

**Counterpart:**

CKK7242-1.8-21

**Typical Application:** HONDA/YAMAHA  
PCM-ECM-ECU



**PART NUMBER:** CKK736-0.6-21

CKK736-0.6-11

**OEM NO.:**

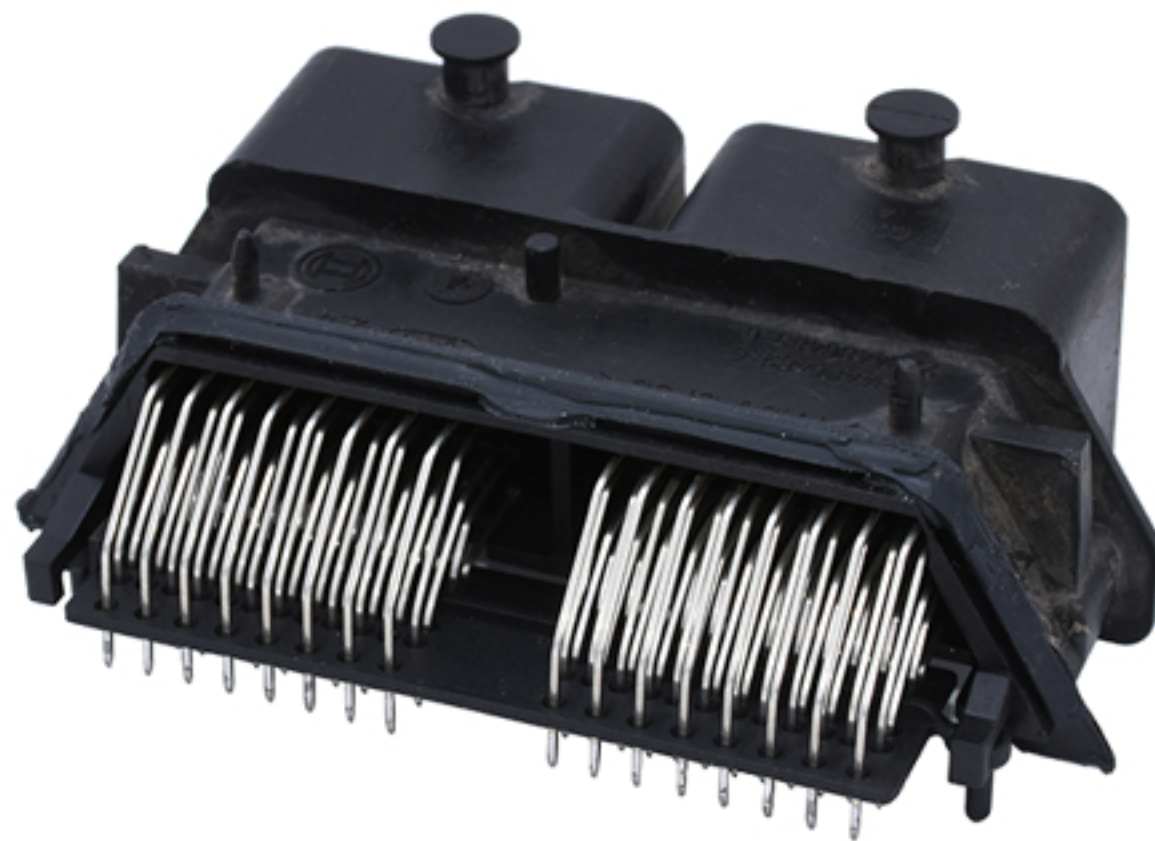
**POSITION:** 36

**Counterpart**

CKK736-0.6-11

CKK736-0.6-21

**Typical Application:** KAWASAKI/TRIUMPH HARLEY  
ECU ECM CDI  
2011 KAWASAKI  
KXF250 KX 250F 11 KX450F 09,  
2011 2012 TRIUMPH



PART NUMBER: CKK112P-K

CKK7561AD-0.6-1.5-21

OEM NO.:

POSITION: 112

56

Counterpart: CKK112P-K

Typical Application:

SWIFT SPORT ZC32S  
KTM DUKE 125 2014 ECU



PART NUMBER: CKK7561AG-0.6-1.5-21

CKK7561BG-0.6-1.5-21

OEM NO.:

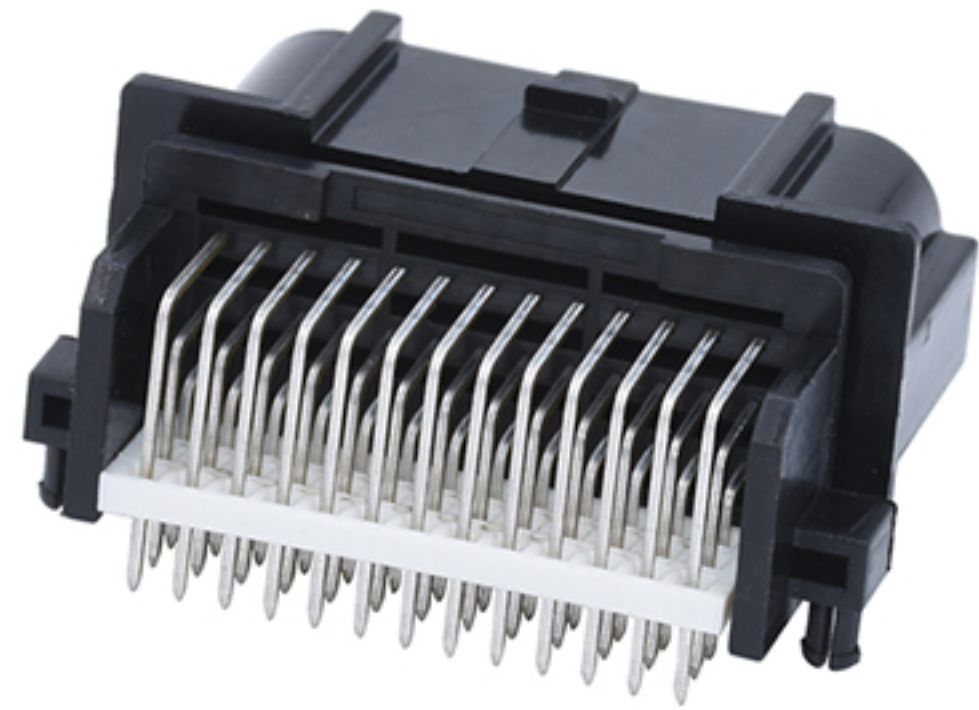
POSITION: 56

56

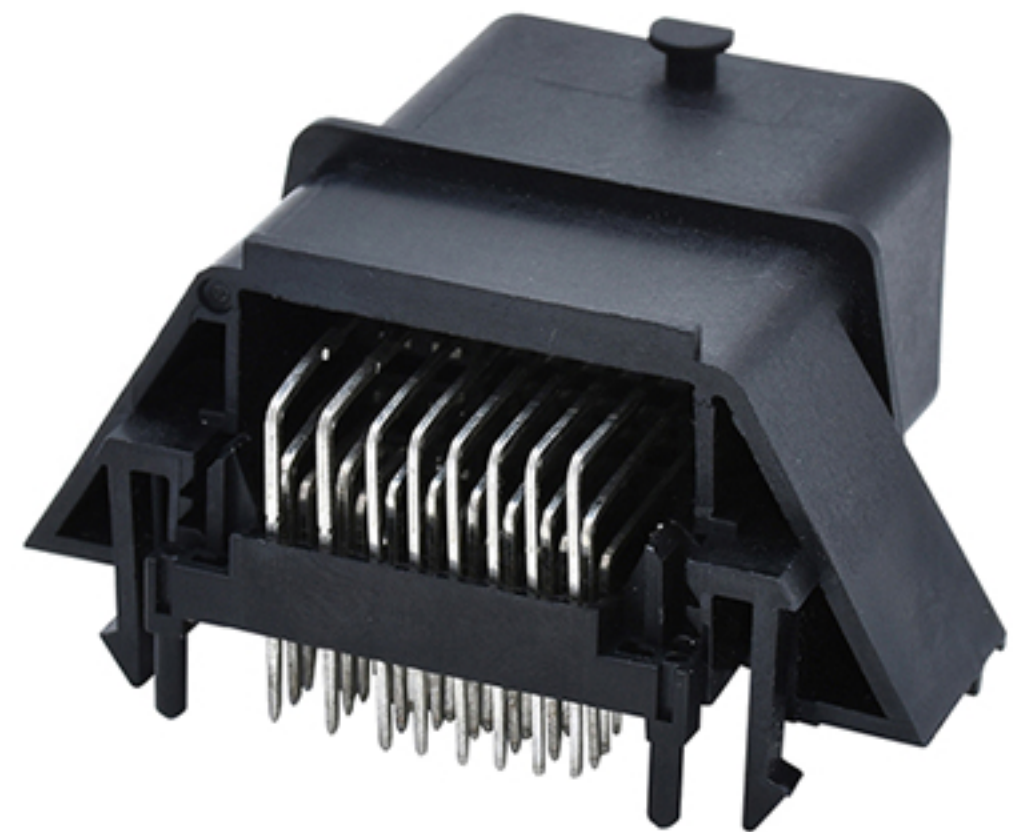
Counterpart: CKK112P-K CKK112P-K

Typical Application:

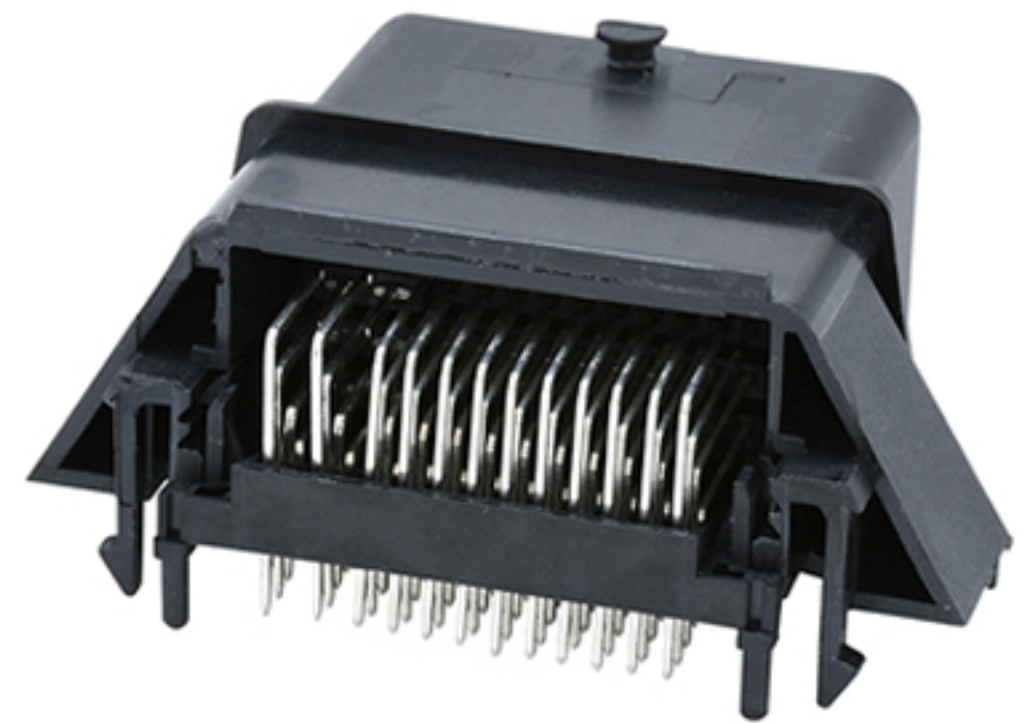
SWIFT SPORT ZC32S  
KTM DUKE 125 2014 ECU  
DUCATI 800SS IGNITION  
AND ECU.  
DUCATI MULTISTRADA 1200 S 2015 (MTS1200 1200S)  
IGNITION, ROM ECU REFLASH



PART NUMBER:	CKK739-0.6-21	CKK739-0.6-11
OEM NO.:	6189-7929	
POSITION:	39	39
Counterpart:	CKK739-0.6-11	CKK739-0.6-21
Typical Application:	YAMAHA GRAND FILANO HYBRID ABS	



PART NUMBER:	CKK732BD-1.0-2.2-21	CKK732B-1.0-2.2-11
OEM NO.:		
POSITION:	32	32
Counterpart	CKK732B-1.0-2.2-11	CKK732BD-1.0-2.2-21
Typical Application:	TRIUMPH HARLEY ECU UNIT (CDI IGNITION) TRIUMPH DAYTONA 955 1 999-2001	



PART NUMBER: CKK748MAD-1.0-2.2-21

CKK7481D-1.0-2.2-11

OEM NO.:

POSITION: 48

48

Counterpart: CKK7481(MA)D-1.0-2.2-11

CKK748MAD-1.0-2.2-21

Typical Application: 2012 Ducati Monster 1100 motorcycle



PART NUMBER: CKK748MA-1.0-2.2-11

OEM NO.:

POSITION: 48

Counterpart: CKK748MAD-1.0-2.2-21

Typical Application: 2012 Ducati Monster 1100 motorcycle